

B		A		
NO.	PART NO.	DESCRIPTION	QTY.	MATERIAL
20	5284101	SPRING WASHER	8	SS304
19	5284488	BODY	1	PA6+GF
18	5284479	O-RING	1	EPDM *
	5284480			NBR
	5284481			FKM
17	5284409	SHAFT GUIDE	1	PA6+GF
16	2143033	FLAT GASKET	1	SS304
15	5284403	PRESSURE PLATE	1	SS304
14	5284404	DISC	1	EPDM
13	5284405	DISC HOLDER	1	PA6+GF
12	5284406	SHAFT	1	SS304
11	5244285	O-RING	2	EPDM *
	5244286			NBR
	5244287			FKM
10	5284476	O-RING	1	EPDM *
	5284477			NBR
	5284478			FKM
9	5284494	LWR DIAPH. PLATE	1	SS304
8	5284420	AUXILIARY DISC	1	EPDM
7	5284411	DIAPHRAGM	1	NBR
6	5284413	UPR DIAPH. PLATE	1	SS304
5	5284483	LOCKNUT	2	SS304
4	5284492	CAP	1	PA6+GF
3	5284484	NUT	8	SS304
2	5284482	BOLT	8	SS304
1	5284485	FLAT GASKET	16	SS304

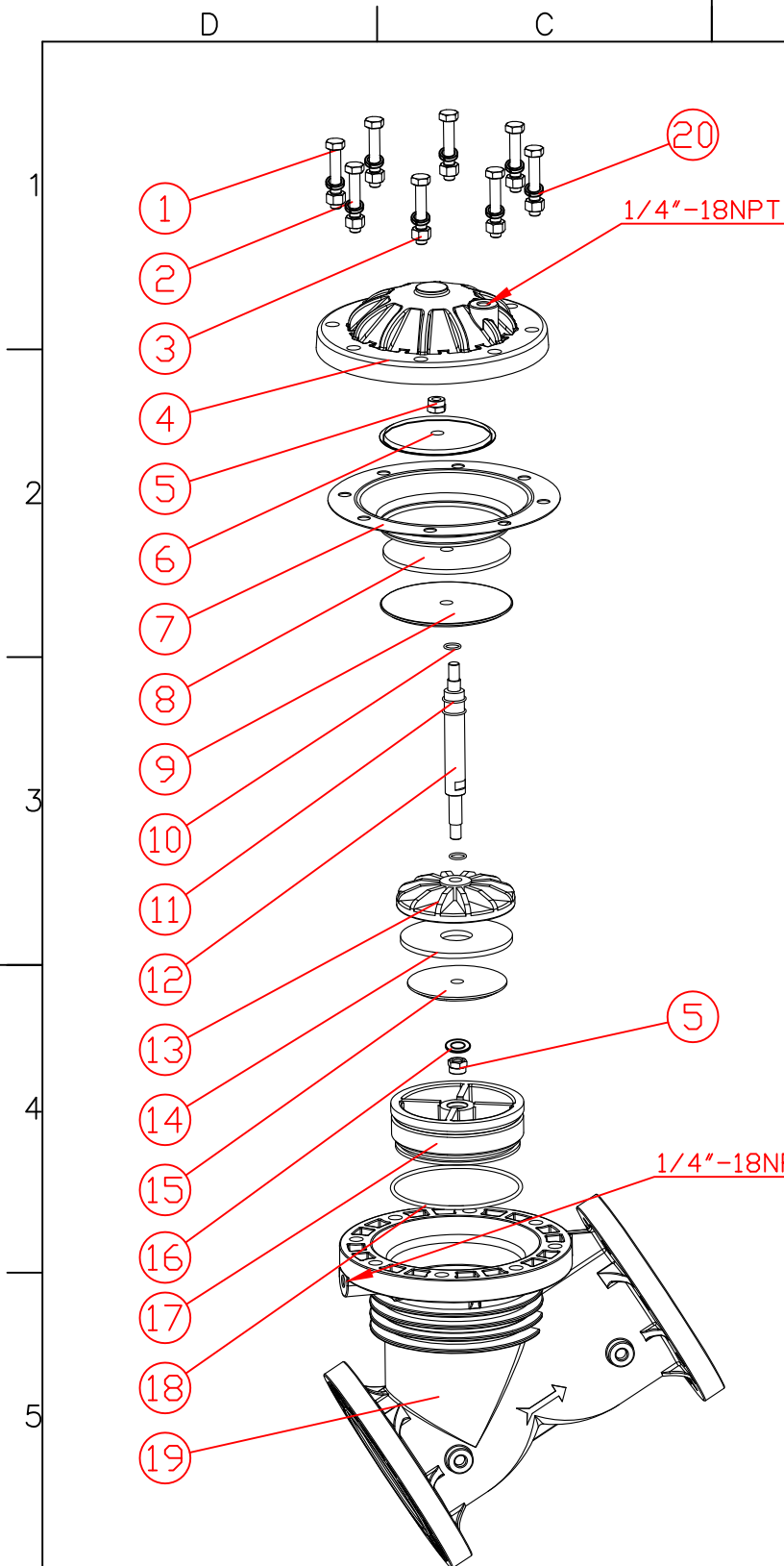
NOTE: * REPRESENT DEFAULT MATERIAL.

NUMBERS	DESCRIPTION OF CHANGES	SIGNATURE	DATE

Y528

GLASS FIBRE
REINFORCED NYLON

JKmatic			
REVISION	QUANTITY	WEIGHT	SCALE
04	/	/	/
UNREMARKED TOLERANCES	/	SHEET 1 OF 1	
MATERIAL GRADE	/	5281001	



B		A		
NO.	PART NO.	DESCRIPTION	QTY.	MATERIAL
20	5284101	SPRING WASHER	8	SS304
19	5284489	BODY	1	NORYL
18	5284479	O-RING	1	EPDM *
	5284480			NBR
	5284481			FKM
17	5284473	SHAFT GUIDE	1	NORYL
16	2143033	FLAT GASKET	1	SS304
15	5284403	PRESSURE PLATE	1	SS304
14	5284404	DISC	1	EPDM
13	5284405	DISC HOLDER	1	PA6+GF
12	5284406	SHAFT	1	SS304
11	5244285	O-RING	2	EPDM *
	5244286			NBR
	5244287			FKM
10	5284476	O-RING	1	EPDM *
	5284477			NBR
	5284478			FKM
9	5284494	LWR DIAPH. PLATE	1	SS304
8	5284420	AUXILIARY DISC	1	EPDM
7	5284411	DIAPHRAGM	1	NBR
6	5284413	UPR DIAPH. PLATE	1	SS304
5	5284483	LOCKNUT	2	SS304
4	5284493	CAP	1	NORYL
3	5284484	NUT	8	SS304
2	5284482	BOLT	8	SS304
1	5284485	FLAT GASKET	16	SS304

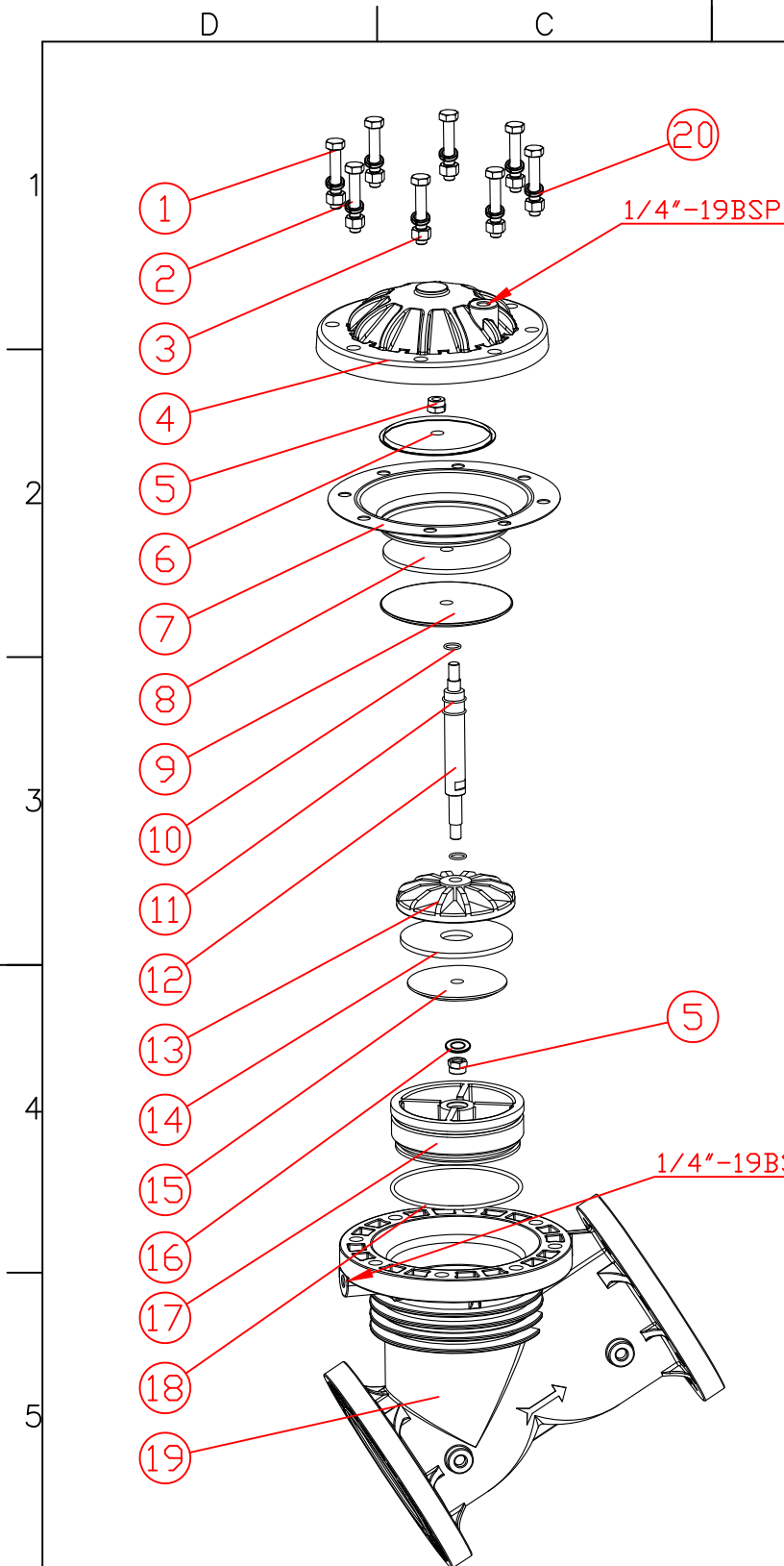
NOTE: * REPRESENT DEFAULT MATERIAL.

NUMBERS	DESCRIPTION OF CHANGES	SIGNATURE	DATE

Y528

NORYL

JKmatic			
REVISION	QUANTITY	WEIGHT	SCALE
04	/	/	/
UNREMARKED TOLERANCES	/	SHEET 1 OF 1	
MATERIAL GRADE	/	5281002	



B		A		
NO.	PART NO.	DESCRIPTION	QTY.	MATERIAL
20	5284101	SPRING WASHER	8	SS304
19	5284402	BODY	1	PA6+GF
18	5284479	O-RING	1	EPDM *
	5284480			NBR
	5284481			FKM
17	5284409	SHAFT GUIDE	1	PA6+GF
16	2143033	FLAT GASKET	1	SS304
15	5284403	PRESSURE PLATE	1	SS304
14	5284404	DISC	1	EPDM
13	5284405	DISC HOLDER	1	PA6+GF
12	5284406	SHAFT	1	SS304
11	5244285	O-RING	2	EPDM *
	5244286			NBR
	5244287			FKM
10	5284476	O-RING	1	EPDM *
	5284477			NBR
	5284478			FKM
9	5284494	LWR DIAPH. PLATE	1	SS304
8	5284420	AUXILIARY DISC	1	EPDM
7	5284411	DIAPHRAGM	1	NBR
6	5284413	UPR DIAPH. PLATE	1	SS304
5	5284483	LOCKNUT	2	SS304
4	5284416	CAP	1	PA6+GF
3	5284484	NUT	8	SS304
2	5284482	BOLT	8	SS304
1	5284485	FLAT GASKET	16	SS304

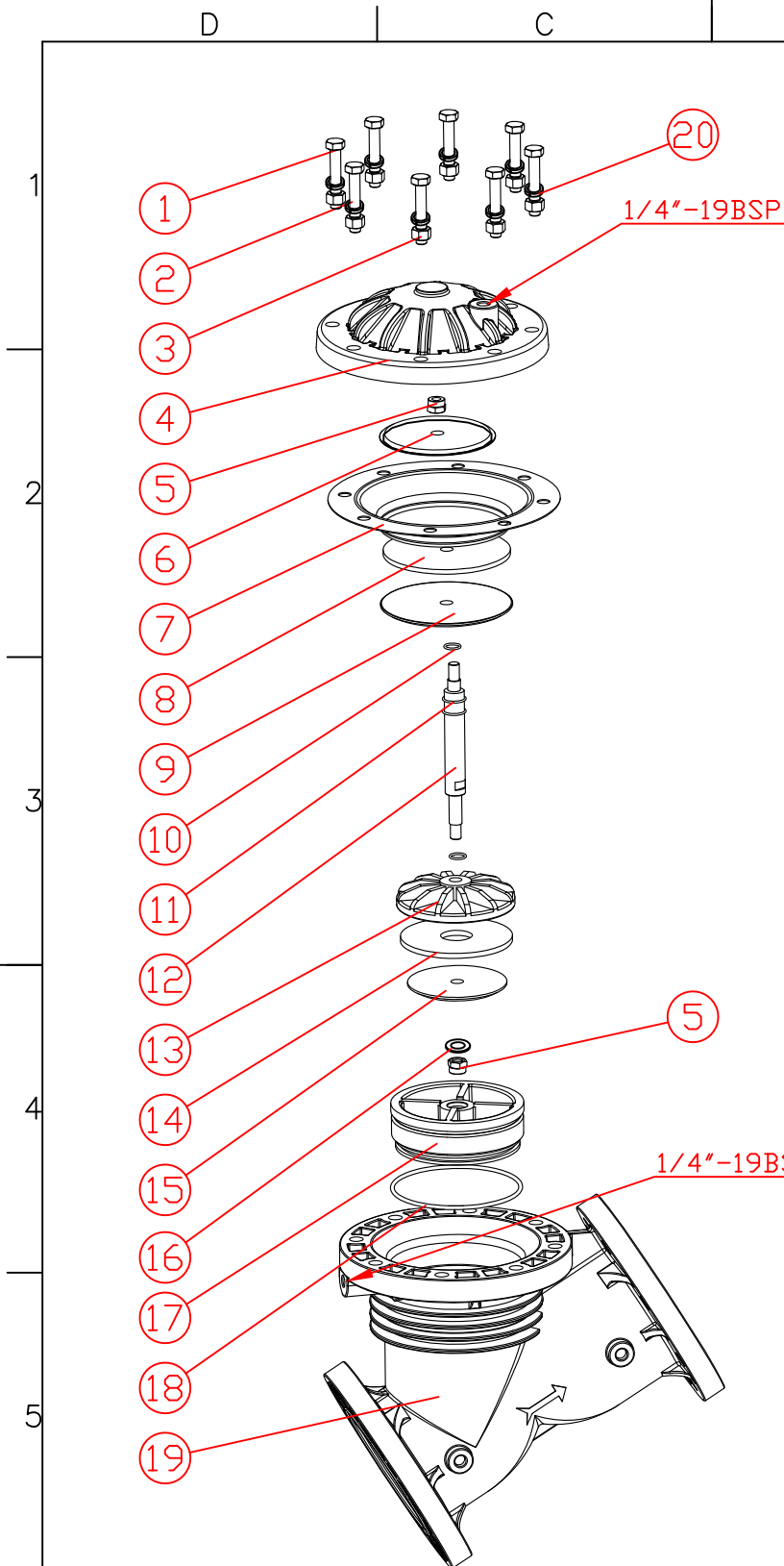
NOTE: * REPRESENT DEFAULT MATERIAL.

NUMBERS	DESCRIPTION OF CHANGES	SIGNATURE	DATE

Y528

GLASS FIBRE
REINFORCED NYLON

JKmatic			
REVISION	QUANTITY	WEIGHT	SCALE
04	/	/	/
UNREMARKED TOLERANCES	/	SHEET 1 OF 1	
MATERIAL GRADE	/	5281003	



B		A		
NO.	PART NO.	DESCRIPTION	QTY.	MATERIAL
20	5284101	SPRING WASHER	8	SS304
19	5284471	BODY	1	NORYL
18	5284479	O-RING	1	EPDM *
	5284480			NBR
	5284481			FKM
17	5284473	SHAFT GUIDE	1	NORYL
16	2143033	FLAT GASKET	1	SS304
15	5284403	PRESSURE PLATE	1	SS304
14	5284404	DISC	1	EPDM
13	5284405	DISC HOLDER	1	PA6+GF
12	5284406	SHAFT	1	SS304
11	5244285	O-RING	2	EPDM *
	5244286			NBR
	5244287			FKM
10	5284476	O-RING	1	EPDM *
	5284477			NBR
	5284478			FKM
9	5284494	LWR DIAPH. PLATE	1	SS304
8	5284420	AUXILIARY DISC	1	EPDM
7	5284411	DIAPHRAGM	1	NBR
6	5284413	UPR DIAPH. PLATE	1	SS304
5	5284483	LOCKNUT	2	SS304
4	5284475	CAP	1	NORYL
3	5284484	NUT	8	SS304
2	5284482	BOLT	8	SS304
1	5284485	FLAT GASKET	16	SS304

NOTE: * REPRESENT DEFAULT MATERIAL.

NUMBERS	DESCRIPTION OF CHANGES	SIGNATURE	DATE

Y528

NORYL

JKmatic			
REVISION	QUANTITY	WEIGHT	SCALE
04	/	/	/
UNREMARKED TOLERANCES	/	SHEET 1 OF 1	
MATERIAL GRADE	/	5281004	